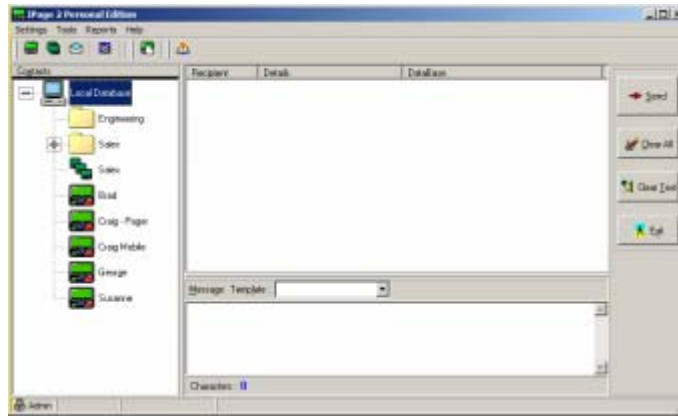


i-Page

Messaging Software



General Description

i-Page is a Windows based network messaging server utilizing IP communications between the server and clients enabling clients on a local or wide area network to send messages to text capable wireless devices such as pagers and cellular phones.

The **i-Page** server software is located on a centralized server PC with access to the carriers to which it is to communicate. The server may have any number of carriers of various protocols and communications mediums.

The **i-Page Client** is loaded on to each PC requiring the ability to send messages. Clients may be located anywhere on the LAN or WAN with normal access to the server.

Contacts are contained either in a local or a shared database with a cascading Explorer-like folder structure. Groups may be set up to allow a single message to be sent to multiple contacts in one hit and may consist of contacts of different types connected to different carriers. There are no limits imposed on the number of carriers, contacts or groups.

Features

- Easy to use intuitive user interface
- TCP/IP communications with clients and with other i-Page servers.
- Simultaneous multiple wireless carrier interfaces
- Serial interfaces to local wireless transceivers
- Unlimited users and groups

- Groups may consist multiple types of contacts
- Shared & private contact databases
- Transaction & status logging
- Time & date stamping of messages
- Canned messages

